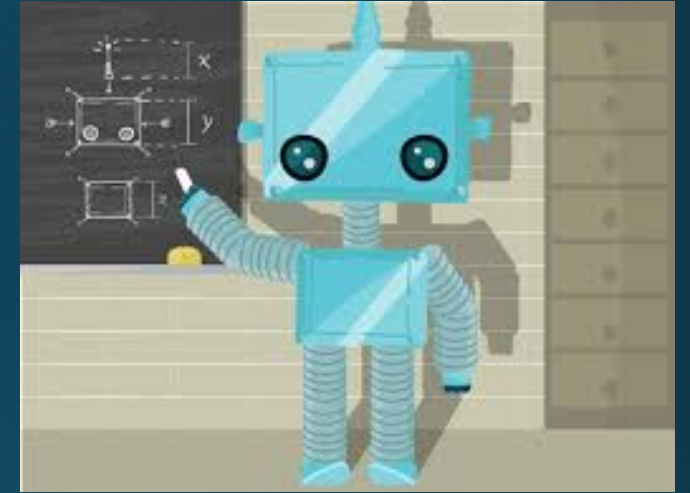


# JOSHUA K. BROWN

---

*President & CEO*  
Icarus Aerospace Inc.



[illegible]

PRESENTED BY: JOSHUA K. BROWN



# INTRODUCTION

## ***Joshua K. Brown***

- President & CEO of Icarus Aerospace Inc.
- Published UAS author & researcher
- Assisted in the creation of UAS legislative bills
- Global Security Doctoral student
- Service-Disabled Navy Veteran who trained and supervised Naval Special Warfare (SEAL) candidates & Aviation Water Survival for pilots
- UAS SME for the National Sheriffs' Association
- SME Consultant for International Association of Chiefs of Police
- Architect of the *UAS for Public Safety* IADLEST NCP Course
- Member of the OSS Society

# EDUCATORS ARE VISIONARIES





2004



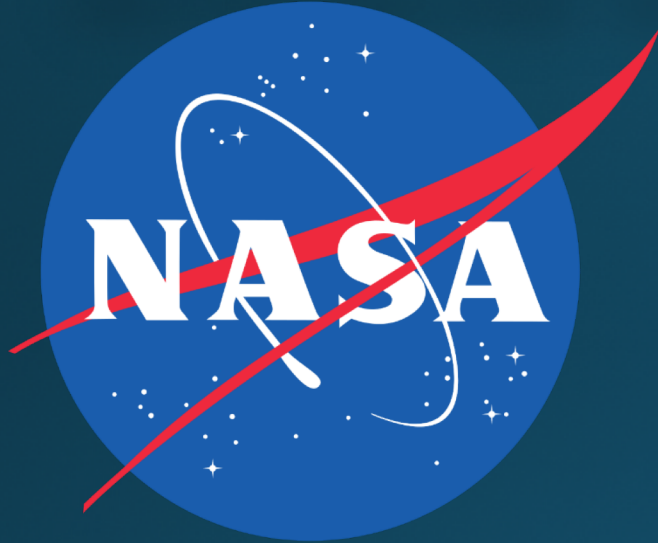
2005



2007



# ICARUS AEROSPACE INC.



New Jersey   
Innovation Institute  
An NJIT Corporation

# THE FUTURE





# JFK



# JAY-Z





# HUMAN-TECHNOLOGY FRONTIER





# UAS IN FIRE FIGHTING





# CONSTRUCTION & SURVEY





# NASA APOLLO 13 NOTES

ECS ACT S-BD ANT ACT	IMU C/A SUIT FAN/H2O CK	TB VERIFICATION	PGNS T/O
ACT 30			
97:26		97:26	
DOCKED IMU COARSE ALIGN		SUIT FAN/H2O SEP CHECK	
1	Verify CSM In Min DEADBAND ATT HOLD	1	CB(16) ECS: SUIT FAN 2 - Open (Master Alarm, SUIT/FAN Warning SUIT FAN Comp Lts - On)
2	Calculate LM Gimbal Angles	2	CB(11) ECS: SUIT FAN 1 - Close H2O SEP SEL - PUSH SEP 1
	OG IG MG	3	SUIT FAN - 1 (SUIT/FAN Warning, FAN Comp Lts-Off, ECS Caution, H2O SEP Comp Lts -Off In 2 min)
	300.00 180.00 360.00		CB(16) ECS: SUIT FAN 2 - Close
	- 2.00 +Rc (See TLC-1)		
	298.00		
	355.57 -CM 167.78 +CM 351.87 -CM		
	(7.5) (112.5) (22.5)		
	302.43 LM 347.78 LM 508.13 LM		
	(292.5) (292.5) (337.5)		
3	V41 N20E COARSE ALIGN IMU F 21 22 LOAD ICDU ANGLES OG,IG,MG (.01°) (NO ATT Lt - On, FDAI Torques)		
	*PROG Lt-On *	1	CB(11) ECS: GLYCOL PUMP 1 - Open (Master Alarm, ECS Caution Lt - On Momentarily)
	*V05 N09E 00211 COARSE *		
	*ALIGN ERROR,Go*	2	CB(11) ECS: GLYCOL PUMP 1 - Close (GLYCOL Comp Lt-On)
	To 3 *		
	654.00		
	355.57		
	302.43		
LM 7			
	Basic Date 2/6/70		
	Changed		

Basic Date	Changed
1/6/70	3/10/70
TEMP/PRESS MON - He (2750-3200 psi)	
- PRPLNT (40°-100°/178-188 psi)	
- FUEL MANF (175-188)	
- OXID MANF (175-188)	
DPS PRESS	
1	PRPLNT QTY MON - DES 1 PROP TEMP/PRESS MON - DES 2 HELIUM MON - AMB PRESS SUPERCRIT PRESS DES HE REG 1 - tb-gray bp DES HE REG 2 - tb-bp
2	DES PRPLNT ISOL VLV - FIRE HE PRESS/DES START - FIRE
3	PRPLNT TEMP/PRESS MON: DES 2&1 (50°-90° FUEL, 50°-90° OXID/242-253 psi) HELIUM MON: AMB PRESS (200-1110 psi) SUPRCRIT PRESS (610-1070 psi)
LANDING GEAR DEPLOY	
1	CB(11) LOGIC PWR A - Open LDG GEAR DEPLOY - FIRE, tb-gray
2	CB(11) LOGIC PWR A - Close LDG GEAR DEPLOY - FIRE MASTER ARM - OFF
ENABLE LMP CONTROLS	
2. Verify Hrs (Hrs) on for 15 min	
2. Balance couple of - Dead band min	
act control - pitch and roll & yaw	
yaw - dist. mode control - as att	
Held, and control - as att. Damp rate	
pitch and roll with TTCA. Yaw	
with ACA - w/ wind earth.	

# DEFENSE ADVANCED RESEARCH PROJECTS AGENCY





# DARPA DESCENDANTS





# QUESTIONS?



## POINT OF CONTACT

Joshua Brown  
Chief Executive Officer  
JBrown@IcarusUAS.com

## ICARUS AEROSPACE INC.

P.O. Box 36  
Woodlyn, PA. 19094  
Phone: 484-408-8248  
URL: [www.IcarusUAS.com](http://www.IcarusUAS.com)