

VOLUME 3 • ISSUE 2  
July 2016

A PUBLICATION OF THE  
STELAR CENTER AT EDC

### The Innovative Technology Experiences for Students and Teachers (ITEST)

program was established by the National Science Foundation (NSF) to help ensure the breadth and depth of the Science, Technology, Engineering, and Mathematics (STEM) workforce, in direct response to concerns and projections about the growing demand for and current shortages of STEM professionals in the U.S.

The STEM Learning and Research (STELAR) Center at Education Development Center, Inc., in partnership with the Goodman Research Group, Inc., assists ITEST principal investigators (PIs) and evaluators to design, refine, and evaluate their ITEST projects and to effectively synthesize and disseminate project findings.

These periodic Data Briefs explore results reported by ITEST project leaders in the Management Information System (MIS), which collects information each year from all active ITEST projects about what the projects do, whom they serve, and their successes and challenges.

For more information, questions, or comments:  
<http://stelar.edc.org>  
[stelar@edc.org](mailto:stelar@edc.org)

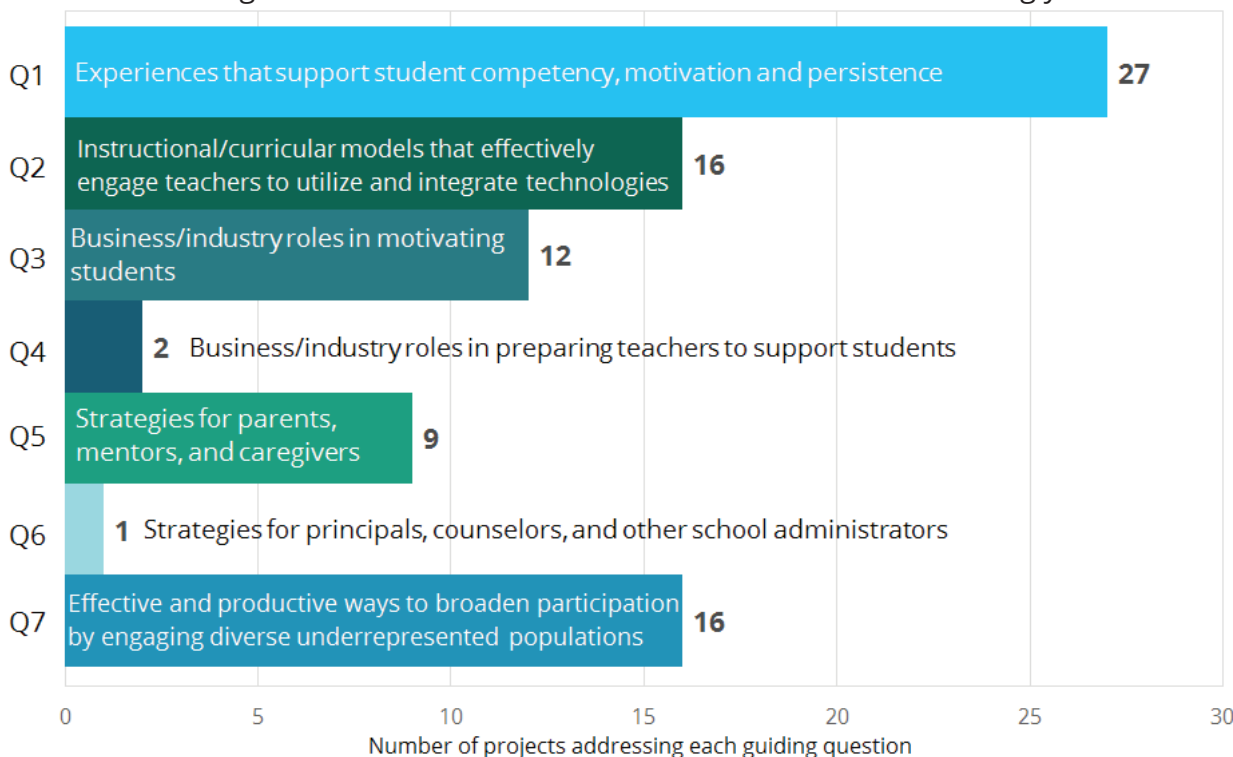
## ITEST Projects Funded in 2015

**30** ITEST projects were awarded funding in 2015, joining **72** currently active projects, for a total of **326** current and past projects funded since 2003. This data brief presents information reported by **97%** of the projects funded in 2015.

### Which ITEST guiding questions do projects plan to address?

Projects must address one or more of the **7 guiding questions** in their research.

**90%** of projects funded in 2015 chose to address more than one question, focusing on the following areas to advance STEM-related career awareness among youth:

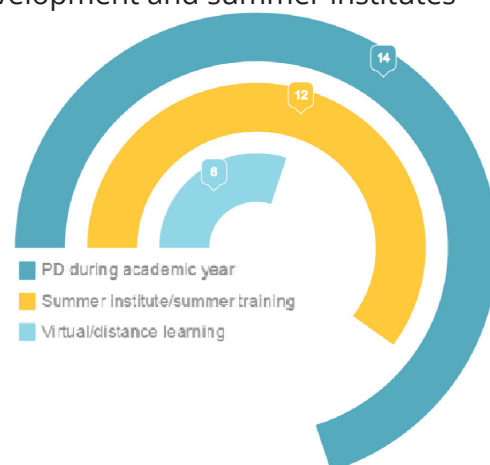
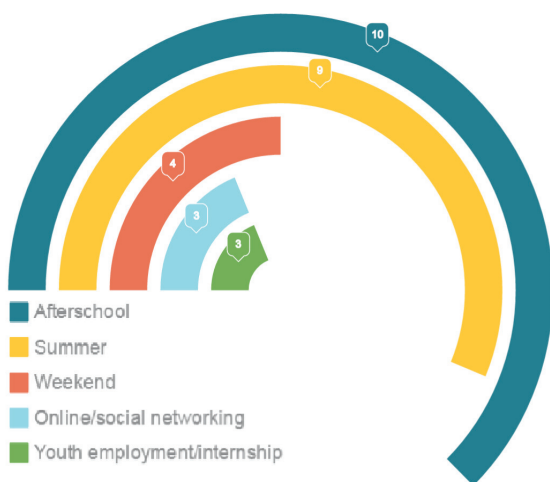


### In what settings do projects conduct their work?

Projects funded in 2015 plan to engage youth and educators in 1-4 different settings.

**70%** of projects that target **youth** utilize informal learning structures

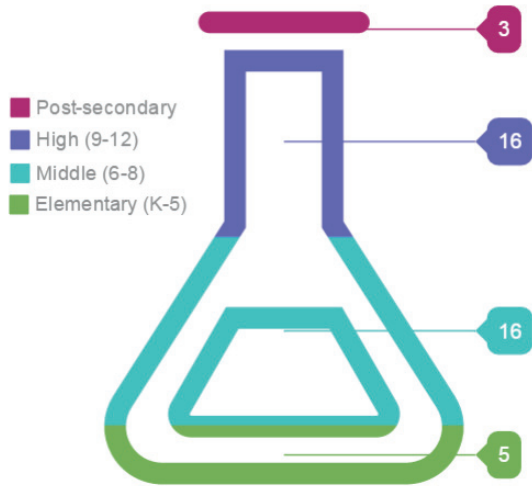
**40%** of projects that work with **educators** include both academic year professional development and summer institutes





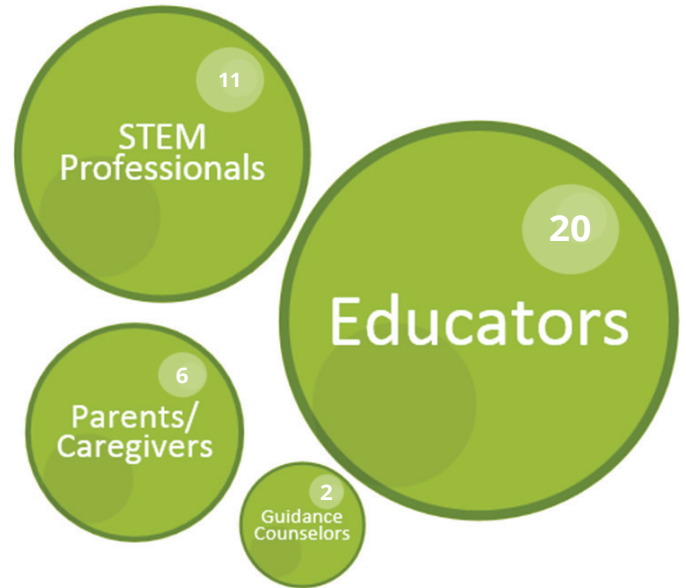
### What grade levels do projects serve?

The majority of projects serve middle and high school youth, and **28%** report working with more than one grade level.



### Who are included as project participants?

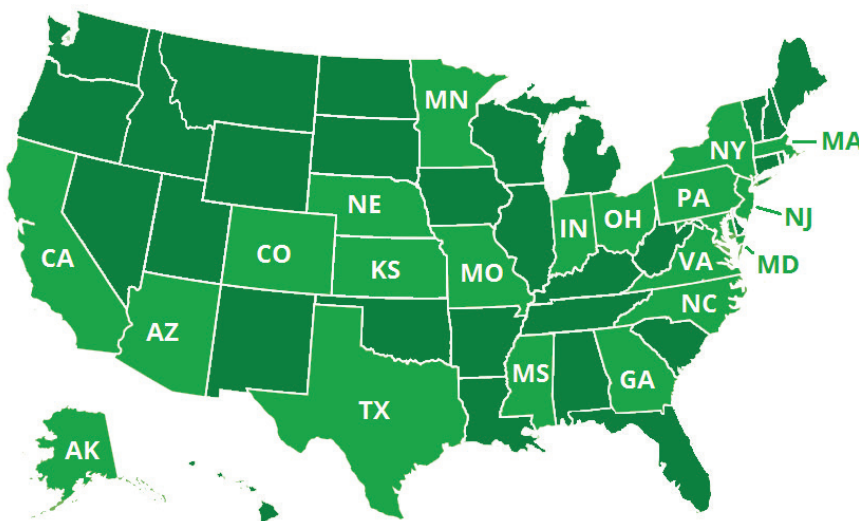
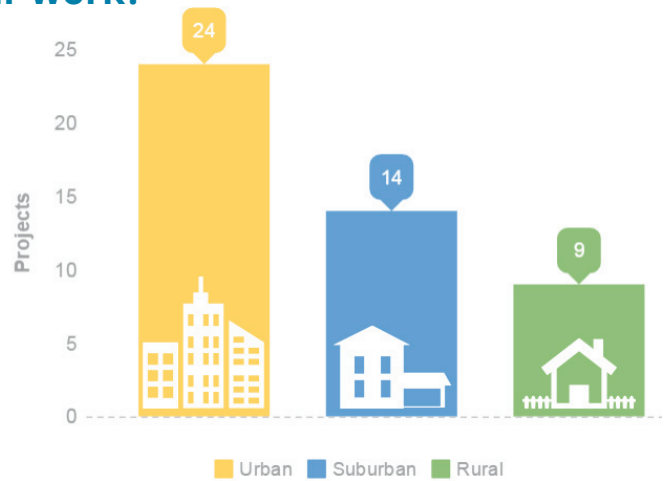
In addition to youth, projects include:



### In what locales do projects conduct their work?

Projects are active in **urban, suburban, and rural areas**, with **38%** conducting their work across multiple areas.

The majority of projects funded in 2015 focus on **urban settings**.



### In what states are ITEST projects active?

Projects that received funding in 2015 are at work in **19** states and the District of Columbia, with one project operating nationally.

